

# Complement in the Brain

## Satellite Symposium

EMCHD 2026



1<sup>st</sup> September 2026

Centre for Student Life

### Schedule

- 8:30 – 9:00 **Coffee and Registration**
- 9:00 – 9:30 **Cynthia Lemere**  
A Role for Complement in Anti-amyloid Antibody-induced Vascular Side Effects (ARIA) in Alzheimer's Disease
- 9:30 – 10:00 **Marcela Pekna**  
C3aR in Stroke Recovery: Mechanisms and Clinical Implications
- 10:00 – 10:30 **Jan Lünemann**  
Complement in Multiple Sclerosis and Related Disorders
- 10:30 – 11:00 **Markus Huber-Lang**  
Role of Complement after trauma in the context of TBI
- 11:00 – 12:30 **Flash talks**
- 12:30 – 13:30 **Lunch and Poster Presentations**
- 13:30 – 14:00 **Paul Morgan**  
Targeting complement in neurodegeneration
- 14:00 – 14:30 **Valeria Ramaglia**  
Complement in the Multiple Sclerosis Brain: Where and How
- 14:30 – 15:00 **Soyon Hong**  
Activity-dependent neuro-glia-immune regulation at the synapse
- 15:00 – 16:30 **Talks for selected abstracts**
- 16:30 – 17:00 **Coffee break**
- 17:00 – 18:00 **Keynote Presentation: Baljit S. Khakh**  
The Cells That Tile Your Brain:  
Astrocyte Function and Failures in Neural Circuits



18:30 Onwards

Opening Ceremony: Evening Drinks & Canapés

Hosted @ The Royal Welsh College of Music & Drama



Centre for Student Life



Royal Welsh College  
of Music & Drama

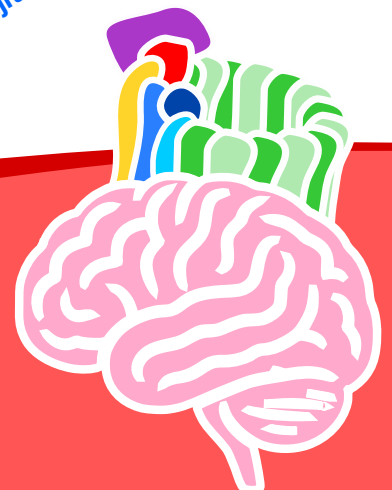
Register Here

Abstract Submission

With Support From:



UK Dementia  
Research Institute



<https://emchd2026.org/>